

Removing Down-stroke Verification Device

This should only be done by experienced users. The disconnecter can be removed from the powder measure if you are using a charge that would overflow the case if a double charge would occur.

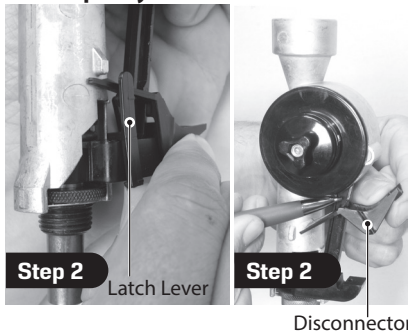
Always use the down-stroke verification device when loading light target loads or fast burning powders that occupy less than two-thirds of the case capacity.

Step 1:

Unscrew the 6-32 x .25 Phillips screw to release the disconnecter down-stroke verification device.



Step 2: Use fingernail on thumb to remove latch lever. Slide up disconnecter along the connecting link to the upper portion of the rod and pull off.



Step 3: Slide the connecting link as far right as possible.



Step 4: Replace the screw in the hole adjacent to the body.



The powder measure will now dispense a powder charge anytime the case enters the die and raises the expander plug a half an inch. A double charge is now more likely if you become distracted during the expanding and charging process. A double charge will blow the gun up and cause serious or fatal injuries to the shooter or persons nearby.